



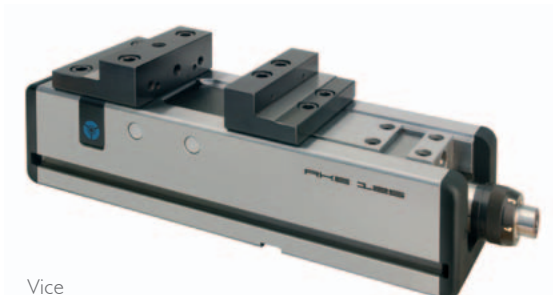
PART
SOLUTIONS

THE STRATEGIC PARTS MANAGEMENT PARTSOLUTIONS AT RÖHM GMBH

CASE STUDY



INTEGRATION OF PARTSOLUTIONS IN SAP AND SOLID EDGE



Vice

RÖHM counts on reliable solutions

Manufacturers from a variety of industries have trusted RÖHM as one of the leaders in clamping technology for decades. CADENAS and RÖHM have been working together since 1998 to reduce their digital parts library. To achieve this, RÖHM has used CADENAS Strategic Parts Management software, PARTSolutions, since 2005.

PARTSolutions helps to manage, find and reduce the volume of CAD components in a fast and easy way, reducing costs in the long-term. Additionally, PARTSolutions is built to facilitate a closer relationship between the purchasing and engineering departments, giving both divisions access to all parts information. This strategy is known as PURCHINEERING – composed of the words ‘purchase’ and ‘engineering’.

Initial situation at RÖHM

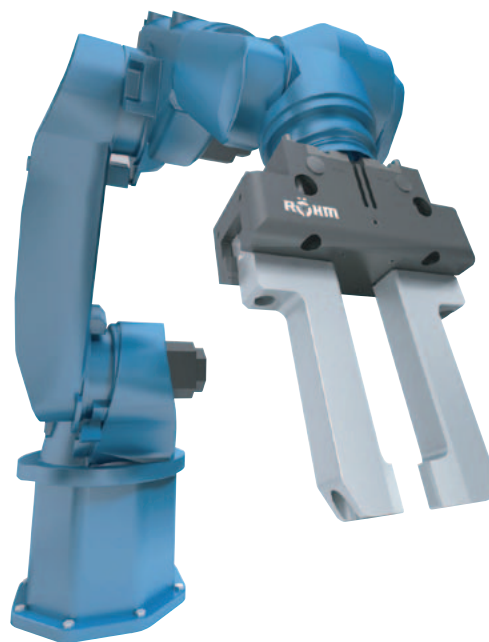
Before PARTSolutions was implemented at RÖHM, CAD parts were manually filed in SAP, requiring a lot of effort with every new part. Depending on the type, each newly created part would cost the company at least 200 Euros.

This is why RÖHM needed a parts management system that could reliably and accurately manage all components with relatively little effort. The goal was to simultaneously reduce the parts diversity while reducing costs.

»By standardizing design and implementing an easy method of supporting the parts catalog, the design processes are streamlined, saving time and finances for the company. Using parts over and over, instead of re-creating them, reduces the burden for departments like procurement and logistics. RÖHM has always relied on robust software solutions, finding a new parts management system meant it would have to be equally as reliable. We have already had very good experiences with CADENAS solutions in use at RÖHM, therefore their Strategic Parts Management system immediately became our focus of attention.«



HEINRICH MÜLLER
CAD ADMINISTRATOR
RÖHM GMBH



Rendered 3D CAD model of a 2-finger parallel gripper



RÖHM is one of the world's leading chucking tool manufacturers with a diverse product range for clamping and gripping technology. For its products, the company is using about 12,000 different standard and supplier parts. RÖHM has a global presence with more than 60 establishments and over 1500 employees, worldwide.

Deciding factors for PARTsolutions

"RÖHM has been working with CADENAS since 1998, therefore, it was natural that they would select a CADENAS solution when they migrated to the Solid Edge 3D CAD system", says Müller.

PARTsolutions is mainly used within the design department:

"Initially our aim was to increase efficiency by improving the design processes. Our design time decreased significantly with the ability to select parts directly from the catalog while designing and using them", Müller proceeds.

PARTsolutions integration into the RÖHM system environment with SAP and Solid Edge

At RÖHM all workstations that are equipped with CAD also have access to PARTsolutions. Altogether about 90 engineers are using CADENAS' Strategic Parts Management at the various company sites.

"At first PARTsolutions was utilized strictly to integrate parts into our Solid Edge environment. After this was successfully fulfilled, we decided to continue and connect it to our SAP system

and implement the user-specific adjustments to our company owned PLM software. CADENAS helped us to tailor PARTsolutions exactly to our needs", says Müller.

This conversion period was accompanied by a series of training sessions. Employees received extensive training to handle the new software and were able to use PARTsolutions at a high level shortly after the introduction. At RÖHM all workstations that are equipped with CAD also have an access to PARTsolutions. Altogether about 90 engineers are using CADENAS' Strategic Parts Management at the different company sites.

Jointly planned projects

PARTsolutions is used in combination with the CAD systems at all RÖHM sites worldwide. Over the course of the conversion from Solid Edge ST 4 to ST 6 during 2014, RÖHM is planning to introduce the current version of PARTsolutions, ensuring a smooth transition between the two systems.

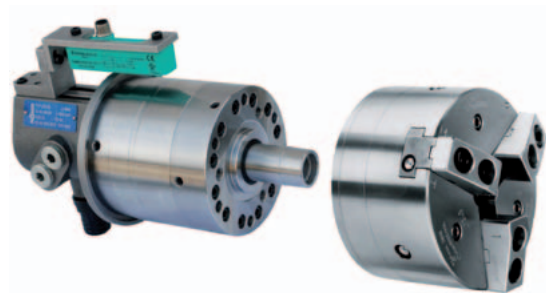
Due to this successful integration, the number of workstations equipped with PARTsolutions will continue to rise with the increasing number of designers using CAD programs.

Conclusion: Increase in efficiency results in cost savings due thanks to the Strategic Parts Management PARTSolutions

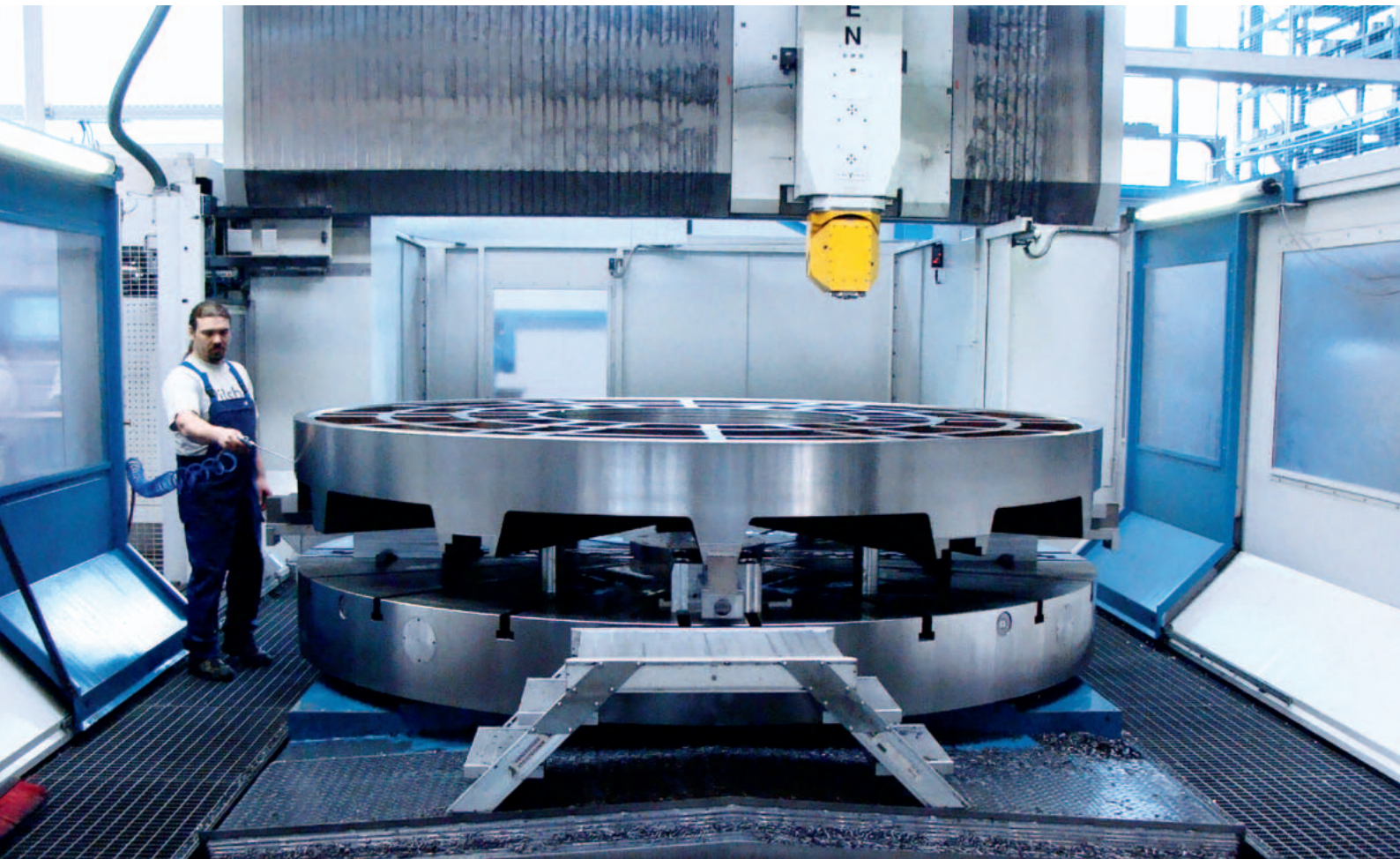
In terms of the overall project Müller draws the following conclusion:

“For designers, the parts management system proved to be very intuitive, parts can be found and used much easier. Now users can check whether the searched part has already been used before it is re-incorporated into the material master data, making internal processes run a lot faster. Although we have to create new master data for a few parts, using PARTSolutions helps by accelerating this process considerably. Now that we can focus our efforts on a smaller volume of new parts we were able to improve our processes significantly. By using PARTSolutions the wasted time and effort of creating and searching for parts in SAP is no longer necessary.

Now designers can work more efficiently which ultimately results in saving costs. In the eight years we have been using the parts management system, our product range has considerably increased. Needless to say this resulted in an increase of required parts as well. However, we are expecting that the new creation of parts increased only slightly compared to the diversity of parts used for our new developments. By using PARTSolutions unnecessary parts growth will be avoided.”



Power clamping technology



Special portal lath and milling machine



Drill chuck montage

COMPANY DESCRIPTIONS

RÖHM GmbH

Founded in 1909, RÖHM is now one of the leading chucking tool manufacturers with a wide and powerful product range for clamping and gripping technology: Drill chucks, live centres, lathe chucks and vices, gripping technology, power chucks, cylinders and mandrels, tool clamping systems and a major potential of special designs. Numerous renowned users in a wide variety of sectors have been placing their confidence in us for decades.

The most popular RÖHM products are the keyless drill chucks EXTRA, the key bar chucks DURO-T, the NC clamping system RKE, the parallel gripper RPP, the centric gripper RZP, the power chucks with through-hole KFD-HS, the power chucks without through-hole KFD, the segment clamping mandrel ABSIS and the HSK clamping system super lock.

With more than 60 establishments and agents and over 1500 employees, RÖHM is one of the most important international providers and always close to its customers.

You find further information about the company at

www.roehm.biz



CADENAS GmbH

CADENAS is one of the leading software developer in the areas of Strategic Parts Management and parts reduction (PARTsolutions), as well as Electronic Product Catalogs (eCATALOGsolutions). With its customized software solutions, the company acts as a link between the component manufacturers and their products and the purchasers.

With its customized software solutions, the company acts as a link between the component manufacturers with their products and the purchasers.

With its 300 employees at 14 international subsidiaries, the name CADENAS (Hispanic: process chains) stands for success, creativity, consulting and process optimization since 1992.

As a trend setter and visionary, CADENAS has established many important trends and innovations:

- Search of CAD components by topology
- The similarity search for CAD parts which runs automatically in the background.
- CAD part search by sketch

You find further information about the company at:

www.cadenas.de

