

CADENAS UNITES

COMPONENT MANUFACTURERS & SUPPLIERS

WITH THE INDUSTRY!



**MANUFACTURERS
& SUPPLIERS**

OF COMPONENTS

**INDUSTRIAL
BUYERS**

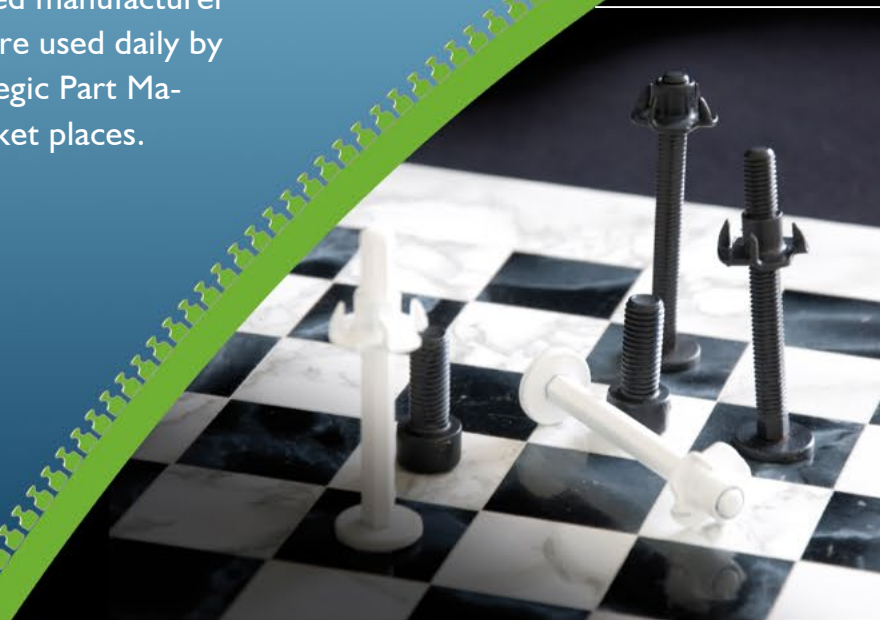
OF COMPONENTS

2012

CADENAS UNITES!

CADENAS' customizable software solutions act as a link between component manufacturers and their products as well as industrial engineers and buyers.

Millions of 3D CAD models from over 500 certified manufacturer catalogs of the eCATALOGsolutions technology are used daily by 3,000,000 engineers and buyers with the Strategic Part Management PARTsolutions or the vertical market places.



THE ELECTRONIC PRODUCT CATALOG eCATALOGsolutions

The perfect solution for component manufacturers to create CAD product catalogs as well as an innovative marketing strategy for components.

- Cross Media Publishing: product catalog for WEB, MOBILE, created as CD-ROM, PDF or PRINT
- Easily combine products: Product wizard and configurator for your customers
- Your catalog on over 50 vertical market places with a potential of 6,000,000 engineers and buyers
- 60 million downloads of CAD models per year, where 87% of downloaded parts lead to purchased products

Many leading companies were able to **increase their sales by more than 30%** due to the Electronic Product Catalog eCATALOGsolutions.

For more information visit:
www.cadenas.de/electronic-productcatalog

THE STRATEGIC PARTS MANAGEMENT PARTsolutions

In many companies PARTsolutions is one of the leading software systems helping engineers and purchasers to manage and find company-, supplier- and standard parts.

- Overall controllable production costs for development and engineering are reduced by 70%
- 3D CAD models with intelligent features
- All technical and business data available at a glance
- All attributes of a component can be filed nice and neat in ERP & PLM
- Access to numerous producer and component information

154 of the top 1,000 global players from Germany rely on the Strategic Parts Management PARTsolutions by CADENAS.

For more information visit:
www.cadenas.de/strategic-partsmanagement



BIONIC LEARNING NETWORK

WWW.FESTO.COM/BIONIC

JANUARY

01 | 2012

MON	TUE	WED	THU	FRI	SAT	SUN	Week
						01	
02	03	04	05	06	07	08	1
09	10	11	12	13	14	15	2
16	17	18	19	20	21	22	3
23	24	25	26	27	28	29	4
30	31						5

New Year's Day: 1st of Jan., Epiphany: 6th of Jan. (bank holiday only in BW, BY, ST)

Festo is a worldwide leader in the field of automation technology and the global market leader for technical training and continuing vocational education. The goal: Maximised productivity and a sharp competitive edge for our customers in the areas of factory and process automation.

FESTO



eCATALOGsolutions AT FESTO AG & Co. KG

Festo AG & Co. KG has been making 2D and 3D CAD data available for its products since 1998 with the help of eCATALOGsolutions technology from CADENAS. At the moment, Festo's internet and DVD catalogue includes more than 25,000 products.

Thanks to CADENAS technology, customers and other interested parties are able to download desired CAD data directly from the Festo product catalogue, and then use them in their own respective design layouts.

INTEGRATION INTO THE FESTO PRODUCT CONFIGURATOR

3D CAD data are integrated into Festo's product configurator as well. This makes it possible for users to download a 3D CAD model of the configured component immediately after completing their configuration selections – or they can have the model sent to them by e-mail.

Improvements at Festo thanks to eCATALOGsolutions

- Up to 140,000 downloads per month were registered for Festo products during the year 2011.
- CADENAS technology with 3D CAD models is seamlessly integrated into Festo's online product catalogue, as well as the product catalogue on DVD.
- 2D and 3D CAD data considerably reduce the design engineer's workload.
- Thanks to integration into the Festo product configurator, CAD data are also available for all of Festo's extremely flexibly configurable products.

"Success is only possible with partners – with CADENAS, we have found a partner with whom we can offer our customers intelligent, process-oriented CAD data. Outstanding acceptance within the market, as well as expandable technology provided by CADENAS, are important collaboration criteria for us."

Jürgen Herr

Employee responsible for CustomerCAD
at Festo AG & Co. KG



MAN TRUCK & BUS USES CADENAS PARTSOLUTIONS AS A
KNOWLEDGE POOL FOR MAN PARTS AND PURCHASED PART CATALOGS

FEBRUARY

02 | 2012

MON	TUE	WED	THU	FRI	SAT	SUN	Week
		01	02	03	04	05	5
06	07	08	09	10	11	12	6
13	14	15	16	17	18	19	7
20	21	22	23	24	25	26	8
27	28	29					9

MAN Truck & Bus AG is the largest company of the MAN corporate group and one of the leading international utility vehicle manufacturers for buses and trucks.



PARTSOLUTIONS AT MAN TRUCK & BUS AG

Since the beginning of 2009, MAN Truck & Bus AG has been implementing the Strategic Parts Management CADENAS PARTSolutions at 1,300 workstations at its global locations. Around 270,000 parts (status 2010) account for the sub-stock of MAN Truck & Bus, where every article number incurs about 3,000 to 4,000 Euro in costs per year.

ENHANCEMENT OF THE CLASSIC SEARCH FUNCTIONS THROUGH THE GEOMETRIC SIMILARITY SEARCH

The classic classification is still very important with the search for parts at MAN. However, not all parts can be classified textually, since these are occasionally too complex or very particular. PARTSolutions completes the existing opportunities of the search for parts. By combining the classic data stocks with the geometric similarity search, all existing 3D CAD parts at MAN Truck & Bus can first be found and then reused according to different textual and geometric attributes.

ONE OF A KIND KNOWLEDGE POOL MADE UP OF PURCHASED PART CATALOGS AND MAN PARTS

PARTSolutions supplies MAN with “pre-classified” content from a multitude of CAD product catalogs, that were created and pre-classified by CADENAS as well as the manufacturers themselves. This database, in combination with the MAN part information from different managing systems, creates a unique knowledge pool that can be used company-wide.

Benefits of PARTSolutions for MAN Truck & Bus

- Integration of all MAN parts inventories from different part information sources.
- Access to the part information of all worldwide MAN locations.
- Improvement of research and search options for existing parts, thus increasing the retrievability of MAN parts.
- The reuse of MAN parts was significantly increased.

Read the case study:



“First of all, PARTSolutions offers us the opportunity to find numerous single parts including complex geometries, cross-location and cross-systems. PARTSolutions can, thanks to the scalable architecture, easily be implemented at more and more work stations at MAN.”

Philip Kraus
Technical Project Manager
MAN Truck & Bus AG



“Engineering is really excited about the search options with PARTSolutions. Especially the combination of classification and geometric similarity is very much appreciated here. The quick and comprehensive 3D preview has become indispensable here!”

Lutz Ginsberg
Manager Development City Bus
MAN Truck & Bus AG



AHP MERKLE SETS THINGS IN MOTION WITH 3D CAD
PRODUCT DATA IN 14 LANGUAGES

MARCH

03 | 2012

MON	TUE	WED	THU	FRI	SAT	SUN	Week
			01	02	03	04	9
05	06	07	08	09	10	11	10
12	13	14	15	16	17	18	11
19	20	21	22	23	24	25	12
26	27	28	29	30	31		13

The family run company AHP Merkle has been developing, designing and manufacturing standard and custom made hydraulic cylinders of high quality since 1973. The company's head office is in Gottenheim near Freiburg and there are numerous overseas representatives in Asia, North America and Europe.



eCATALOGSOLUTIONS AT AHP MERKLE GMBH

AHP Merkle, a manufacturer of hydraulic cylinders, "sets things in motion" by providing first-class quality service to domestic and foreign customers. For example, all information on AHP Merkle components is offered in the customer's respective language.

3D CAD PRODUCT DATA IS NOW AVAILABLE GLOBALLY AND AROUND THE CLOCK

To provide customers with CAD download data of products around the clock, AHP Merkle introduced the Electronic Product Catalog in the year 2000, which is currently available in 14 languages. Moreover a CD ROM with 3D CAD data is attached to every issue of the AHP Merkle print catalog. The product assistant accesses CAD data of the Electronic Product Catalog and in turn product descriptions are now automatically generated.

As the 3D PDF data sheet was introduced, the cylinder reduction feature was especially developed for AHP Merkle. It reduces the length of cylinders to a presentable size and provides automatic dimensioning.



"For ten years we have been cooperating with CADENAS, achieving many successful developments like the CAD product catalog, the offline CD ROM, the product assistant, the 3D PDF data sheet and the joint trade show appearances at the Euromold 2010 and 2011. In the past years we have been able to inspire our customers with many exciting innovations."

Christen Merkle
Managing Director
AHP Merkle GmbH

Benefits of eCATALOGsolutions for AHP Merkle

- The CAD models no longer have to be manufactured by the AHP Merkle design department on specific customer requests; instead they can be downloaded directly from the online download portal.
- The contents of the offline CD ROM are easily exported from the CAD catalog.
- The product assistant reduces the number of incorrect product descriptions and thereby minimizes the need of customer consulting services from AHP Merkle.
- The cylinder reduction feature for 3D PDF data sheets allows cylinders to be displayed in a presentable size and still contain all important dimensions.



CENTRAL STANDARD PARTS MANAGEMENT **PART**SOLUTIONS
INCREASES REUSABLE PARTS AT EUROCOPTER

APRIL

04 | 2012

MON	TUE	WED	THU	FRI	SAT	SUN	Week
						01	13
02	03	04	05	06	07	08	14
09	10	11	12	13	14	15	15
16	17	18	19	20	21	22	16
23	24	25	26	27	28	29	17
30							18

Eurocopter, founded in 1992, is now a French-German company and a division of EADS, one of the world's leading corporations in the aerospace industry, in the defense industry, and the related services. The Eurocopter Group employs around 17,500 people.



PARTSOLUTIONS AT EUROCOPTER

Since 2008, Eurocopter has been implementing the Strategic Parts Management PARTsolutions by CADENAS in its entire company. The CADENAS solution developed a centralized system, which combines purchased parts, internal standard parts and aerospace standards, and completely integrates them into the software environment of the Eurocopter Group.

Benefits of PARTsolutions for Eurocopter

- Optimization of construction processes.
- Effective and lasting reduction of costs.
- Link between the existing CAD, PDM and ERP systems.
- Increase of similar and repeat parts in the company.
- A centralized standard parts management in one single tool that is managed only by one single Eurocopter department – the standardization department.
- Simplified access to Eurocopter standard parts for the engineering departments and availability of purchased and own parts in one single interface.
- Increased user satisfaction, since all information is available at a glance.

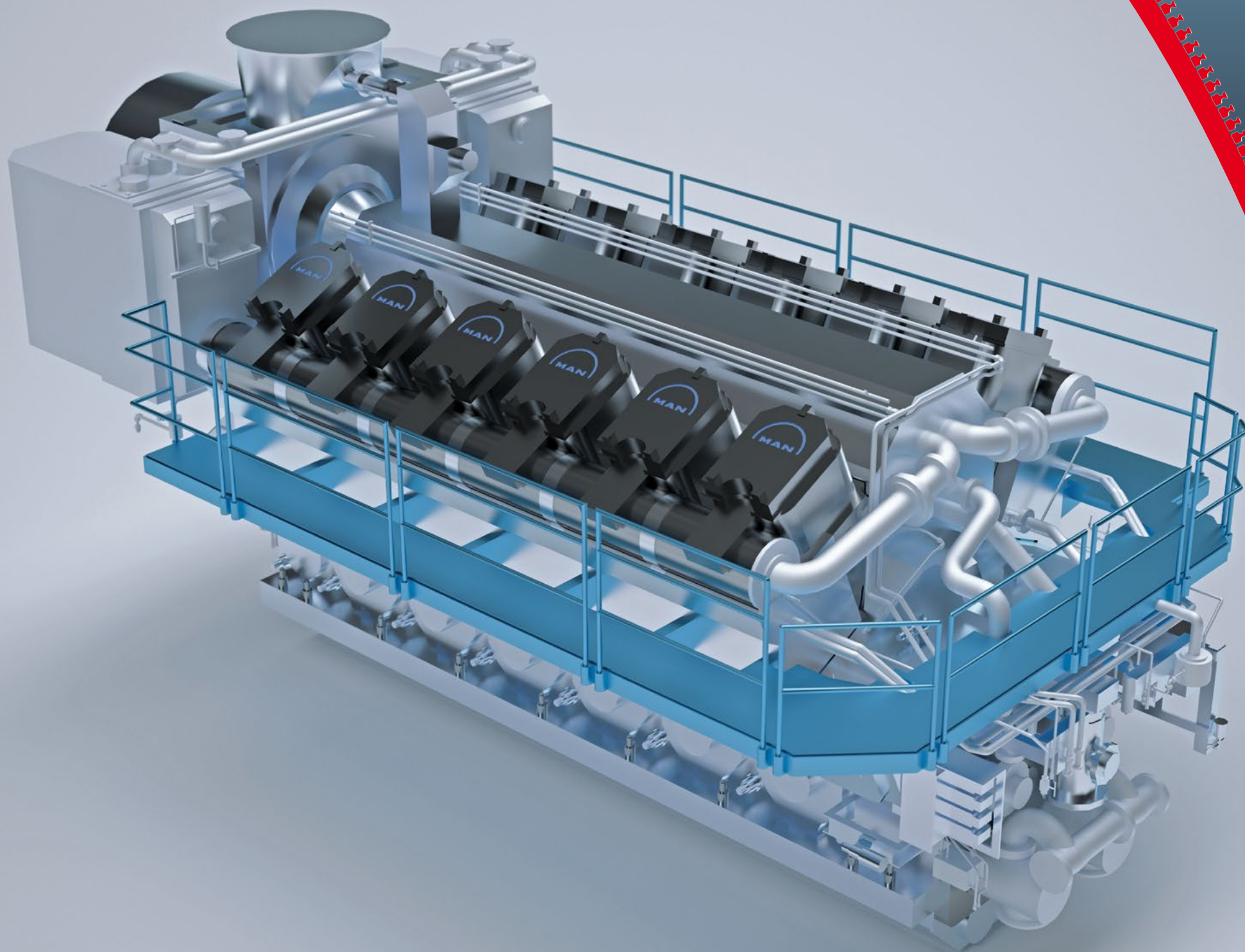


"I would especially like to point out the ability of CADENAS to sign a global contract with the Eurocopter Group. This is, despite the global market, not always an easy feat. We only have one Eurocopter Group license, which enables us strategic use as a standard at all locations and further subsidiaries. This is a WIN/WIN situation for all involved."

Manfred Seiler
Senior Manager - Head of Engineering
PLM - solutions - IM directorate
EUROCOPTER

Read the case study:





INTELLIGENT 3D CAD MODELS SPEED UP PRODUCT CONFIGURATION
OF HIGHLY COMPLEX MOTORS AT MAN DIESEL & TURBO

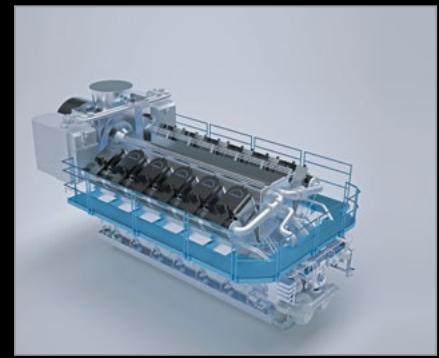
MAY

05 | 2012

MON	TUE	WED	THU	FRI	SAT	SUN	Week
	01	02	03	04	05	06	18
07	08	09	10	11	12	13	19
14	15	16	17	18	19	20	20
21	22	23	24	25	26	27	21
28	29	30	31				22

Labor Day (in Germany): 1st of May (bank holiday), **Mother's Day:** 13th of May, **Ascension Day:** 17th of May (bank holiday), **Pentecost:** 27th of May, **Pentecost Monday:** 28th of May (bank holiday)

MAN Diesel & Turbo SE, based in Augsburg, Germany, is the world's leading provider of large-bore diesel engines and turbomachinery for marine and stationary applications. The company employs around 13,500 staff at more than 100 international sites, primarily in Germany, Denmark, France, Switzerland, the Czech Republic, Italy, India and China.



eCATALOGSOLUTIONS AT MAN DIESEL & TURBO SE

Since 2008, MAN Diesel & Turbo SE has been using the Electronic Product Catalog eCATALOGsolutions in connection with the recently used engine configuration tool 3D Engine-Viewer.

The 3D Engine-Viewer enables MAN's customers, such as shipyards, to integrate 3D CAD models of the most varying and complex engines into the constructions of ships or power plants early on. Via the tool available on an online platform, more than 10,000 variations of an engine series can quickly and easily be configured.

In the past, the 3D Engine-Viewer only offered neutral static geometries. In contrast, CADENAS offers MAN Diesel & Turbo intelligent, process-oriented 3D CAD data and is considered as a link between MAN as supplier and shipyards or power plants as buyers.



"We are always impressed at how good the actual use of the CAD models is thanks to CADENAS. Compliment to the peers in Croatia!"

Josef Zeilmann
Marine Application Engineering
Propulsion & Engine Room System (MEE)
MAN Diesel & Turbo SE

Benefits of eCATALOGsolutions for MAN Diesel & Turbo

- MAN customers receive detailed 3D CAD models of the motors within the shortest possible amount of time. This minimizes the possibility that customers may switch to the competition and gives MAN Diesel & Turbo an impressive competitive advantage.
- The CAD models are available for download in all current CAD formats for mechanical and nautical engineering, such as AVEVA PDMS, Tribon M3 and NUPAS CADMATIC.
- The intelligent CAD models additionally contain important attributes, such as nozzles and other technical attributes. This then simplifies things for the CAD user concerning specification of the model in his construction.
- For CAD models of varying motors, no large amounts of data need to be saved any longer, thanks to the dynamic CADENAS technology.



SUPPLIER AND PARTS CONSOLIDATION WITH CADENAS PARTSOLUTIONS
FOR SMS SIEMAG AG

JUNE

06 | 2012

MON	TUE	WED	THU	FRI	SAT	SUN	Week
				01	02	03	22
04	05	06	07	08	09	10	23
11	12	13	14	15	16	17	24
18	19	20	21	22	23	24	25
25	26	27	28	29	30		26

Feast of Corpus Christi: 7th of June (bank holiday only in BW, BY, HE, NRW, RP, SL)

For over 140 years SMS Siemag AG has been developing, designing and building machinery and plants for the worldwide iron, steel and rolling mill industries. The market range includes plants for the complete process chain – extending from steelmaking, continuous casting- and rolling mill technology to surface-finishing lines for hot and cold strip.



PARTSOLUTIONS AT SMS SIEMAG AG

Since 2006, SMS Siemag AG has been using CADENAS PARTSolutions as a leading search and release system for all standard and catalogue parts. At SMS Siemag AG the Strategic Parts Management with its convenient search functions and 3D thumbnail previews, is used at over 2,500 CAD workstations and more than 50 linked engineering offices.

PARTSolutions is directly integrated with the interfaces of the CAD systems Autodesk AutoCAD, Mechanical Desktop and Inventor as well as Creo Elements/Pro. Moreover, the parts managements system is linked with the PLM system Windchill PDMLink and with the mySAP ERP system.

SUPPLIER CONSOLIDATION WITH PARTSOLUTIONS

Thanks to its interface with the mySAP ERP system, PARTSolutions makes it possible to visually mark the release status and the benefits of standard and catalogue parts. Components which may be used for design, are marked in “green” or “yellow”, whereas components that are not used within SMS Siemag are marked in “red”.

SMS Siemag is in a position to manage all necessary standard and catalogue parts with CADENAS PARTSolutions. An application can be made centrally to the Parts Management department in Germany in respect of standard and catalogue parts which have not been used so far.

Besides the management of repeat parts, PARTSolutions supports the entire SMS group worldwide in order to consolidate suppliers throughout all company sites.



“Our design engineers are not allowed to download CAD data via the websites of the suppliers. New parts always have to be applied for via CADENAS and be released centrally.”

Bernd Postaremczak
Coordinator Parts Management
SMS Siemag AG

Improvements enjoyed by SMS Siemag due to PARTSolutions

- All standard and catalogue parts are provided within just one system.
- Due to the seamless integration into CAD, PLM and ERP systems, all parts information is available to engineers and buyers at a glance without change of system.
- The number of suppliers is consolidated by using PARTSolutions at all company locations.



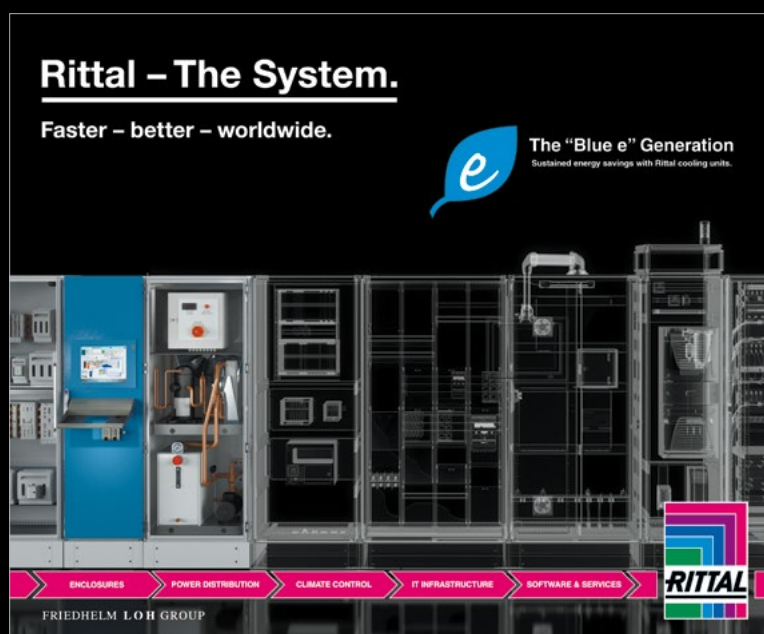
Rittal – The System.

Faster – better – worldwide.

JULY

07 | 2012

MON	TUE	WED	THU	FRI	SAT	SUN	Week
						01	26
02	03	04	05	06	07	08	27
09	10	11	12	13	14	15	28
16	17	18	19	20	21	22	29
23	24	25	26	27	28	29	30
30	31						31



Rittal GmbH & Co. KG, which has its headquarters in Herborn, Germany, is one of the world's leading system suppliers for enclosures, power distribution, climate control, IT infrastructure and software & services.

Customers from all sectors of industry, from mechanical engineering as well as from the IT market, are making use of system solutions from Rittal.

Rittal in numbers:

- Worldwide 10,000 dedicated employees
- 10 production sites
- 63 international subsidiaries
- 40 international agencies

eCATALOGSOLUTIONS AT RITTAL GMBH & Co. KG

In 2004, Rittal GmbH & Co. KG decided to implement a 3D CAD catalogue based on the eCATALOGsolutions technology by CADENAS, in order to come to terms with the increasing number of requests by customers for 3D CAD data. The Rittal catalogue "RiCAD 3D" makes the respective CAD models of the system solutions and single components available for download and integration into the most different of CAD systems for customers and prospective customers interested, thus offering the best customer service possible.

RITTAL'S CUSTOMER-ORIENTED ONLINE CONFIGURATION WITH CAD MODELS

Among other things, Rittal offers customised product configurations for complex system solutions on its company website. An important feature is that users can request any CAD model directly from the configuration results. These CAD models are based on the 3D CAD data contained in the electronic catalogue. This enables Rittal's customers to conduct precise application-relevant configurations as well as request error-free CAD data, independently of special CAD software and deep-rooted product knowledge.



"With the original CAD data, which are available in the multiCAD format, we can complete the engineering process with Rittal – The System and give our customers the opportunity to construct and plan more efficiently."

Jan-Henry Schall
Team Leader in Product Management
Rittal GmbH & Co. KG

Customer advantages through Rittal – The System.

- Through the native 2D/3D-multiCAD format, all CAD data can be transferred into all up-to-date CAD systems.
- Through the true-to-detail and validated sketches, construction designs can be created by the users with optimum planning security and this in a split second, such as with conventional engineering by simple reconstructing.
- Due to the freely selectable level of detail of the CAD models, they can be displayed greatly simplified and thus enable enormous performance increases for the users.



AIM

ASSEMBLY IN MOTION
GMBH

BRANDS OF AIM
ELWEMA AUTOMOTIVE GMBH
ROHWEDDER MACRO ASSEMBLY GMBH
ROHWEDDER MICRO ASSEMBLY GMBH

AIM CONTAINS THE UNCONTROLLED GROWTH OF PARTS
WITH CADENAS PARTSOLUTIONS

AUGUST

08 | 2012

MON	TUE	WED	THU	FRI	SAT	SUN	Week
		01	02	03	04	05	31
06	07	08	09	10	11	12	32
13	14	15	16	17	18	19	33
20	21	22	23	24	25	26	34
27	28	29	30	31			35

Assumption Day: 15th of August (bank holiday)

The newly founded subsidiary of Günther Holding GmbH, AIM – Assembly in Motion GmbH, is a specialized company within the cleaning, testing and assembly technique areas with its business branches ELWEMA, Rohwedder Macro and Rohwedder Micro.



PARTSOLUTIONS AT AIM GMBH

Since 2009, AIM Assembly in Motion GmbH has been implementing the Strategic Parts Management PARTsolutions at 65 mechanical engineering workstations at all of its four locations.

CADENAS PARTsolutions offers AIM an all-encompassing CADENAS library with numerous manufacturer catalogs, of which more than 100 are being used at AIM. In order for engineers to be able to review all information at a glance, the CADENAS software solution PARTsolutions supplies AIM with interfaces to the ERP proALPHA Production, as well as to the CAD system Autodesk Inventor.

CONNECTION TO ENGINEERING OFFICES

Since 2011, AIM has also been using the supplier portal which is based on PARTcommunity technology by CADENAS. Around 20 external engineering offices can be integrated into the construction process with more ease. These then receive direct access to all released, as well as current CAD data, and AIM company standards.

Benefits of PARTsolutions for AIM

- PARTsolutions is the central system for managing all part information that can be accessed from all locations.
- Avoiding new duplicates with comprehensive search functions and standardized processes for releasing CAD models of new components.
- The use of pre-constructed CAD models from purchased parts catalogs significantly reduces the work of engineers.
- Save time for the search for 3D CAD models with catalog structures and comprehensive search functions such as with the use of a 2D sketch.
- With the supplier portal, external engineering offices finally have access to all current up-to-date data of AIM components. In addition, errors are avoided when entering new CAD data by external partners.



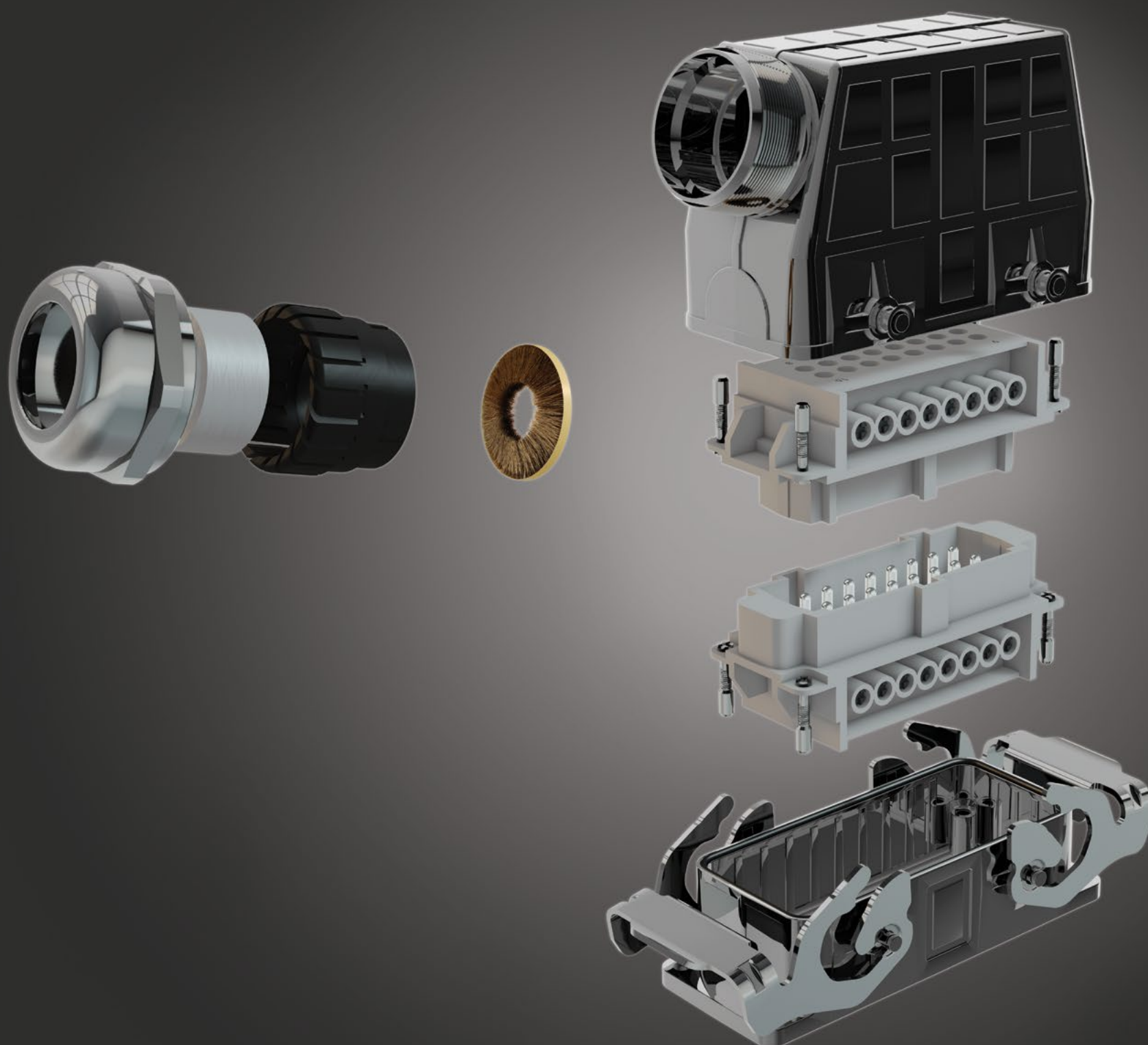
"With PARTsolutions our uncontrolled parts growth was contained and the engineers were able to concentrate on their actual tasks again, focusing more on the challenges of engineering."

Matthias Kienle
Engineering Mechanic
AIM Assembly in Motion GmbH



"The supplier portal PARTcommunity significantly eases our communication with our external engineering offices while simultaneously minimizing the risk of error for incorrect CAD file names."

Eberhard Ilg
Technical Manager
AIM Assembly in Motion GmbH



SEPTEMBER

09 | 2012

MO	DI	MI	DO	FR	SA	SO	KW
					01	02	35
03	04	05	06	07	08	09	36
10	11	12	13	14	15	16	37
17	18	19	20	21	22	23	38
24	25	26	27	28	29	30	39

Headquartered in Stuttgart, Germany, the Lapp Group is a leading supplier of integrated wire, cabling and connector products and solutions. Lapp Group's core markets are in the mechanical and plant engineering and electronics manufacturing sectors, with rapid market expansion in the renewable energy, mobility and life science industries.



eCATALOGSOLUTIONS AT THE LAPP GROUP

Since 2001, the Lapp Group has been implementing CADENAS' Electronic Product Catalog. The CAD catalog of the manufacturer for cables, circuits and cable accessories, currently contains around 3,000 products and makes all important CAD data of the entire product range available for customers and interested parties. In addition users can preview and download all important part information in the respectively provided 3D PDF datasheet.

DOWNLOAD PORTAL PARTCOMMUNITY

In 2010, the Lapp Group presented its new online download portal PARTcommunity together with CADENAS. Since then, Lapp has been offering its customers even better service thanks to the comprehensive search functions. In addition, all products in the PARTcommunity portal have a 3D preview and can be easily downloaded in over 85 CAD formats and imported into the respective CAD system.



"We want to support our customers in the creation of technical documentation. With our free PARTcommunity, they can not only better illustrate solutions requiring explanation, but thanks to the 3D visual appearance select the perfectly fitting Lapp product."

Thomas Holzbaur
Spokesman for CEO
U.I. Lapp GmbH

Benefits of eCATALOGsolutions for the Lapp Group and their clients

- Close connection with customers due to easy integration of LAPP products into new constructions.
- Quick and easy access to 3D data worldwide for all Lapp companies.
- Revenue is increased since new customers have become aware of Lapp.
- Worldwide increasing download numbers, in other words an increase of numbers for Lapp products in new construction designs.
- Thanks to native format as download, no data loss is created through converting into transfer format.
- The construction process is simplified for customers thanks to pre-constructed 3D CAD parts.
- Finding the fitting part is made simpler through new search functions.
- The 3D preview and the 3D PDF datasheet offer customers and interested parties even more information about Lapp products.



PowerWind

POWERWIND REDUCES PROCESS COSTS OF ENGINEERING
AND PURCHASE BY UP TO 10% WITH PARTSOLUTIONS

OCTOBER

10 | 2012

MON	TUE	WED	THU	FRI	SAT	SUN	Week
01	02	03	04	05	06	07	40
08	09	10	11	12	13	14	41
15	16	17	18	19	20	21	42
22	23	24	25	26	27	28	43
29	30	31					44

Founded in 2007, PowerWind GmbH designs and manufactures wind energy plants of the performance class 850 to 2500 kilowatt and offers product-specific services. The company's head office is in Hamburg with manufacturing is located in the high-end factory in Bremerhaven.

PowerWind



PARTSOLUTIONS AT POWERWIND GMBH

To be prepared for future requirements and to reduce production costs effectively, PowerWind GmbH, a manufacturer of wind energy plants, has been using the Strategic Parts Management PARTSolutions by CADENAS since 2009.

The part management system has two interfaces in the PDM system: PRO.FILE, as well as the CAD system Creo Elements/Pro used at PowerWind. This way PARTSolutions fits into the complete process chain of PowerWind GmbH. The software solution PARTSolutions enables several departments of PowerWind, such as engineering and the purchasing or standardization department, access to all necessary component information.

LABELING OF PREFERRED COMPONENTS

PARTSolutions provides PowerWind with an innovative system to label strategically preferred supplier catalogs. Labeling components emphasizes which should be used for a certain project or product, since there had been agreements on special prices with the respective manufacturers.

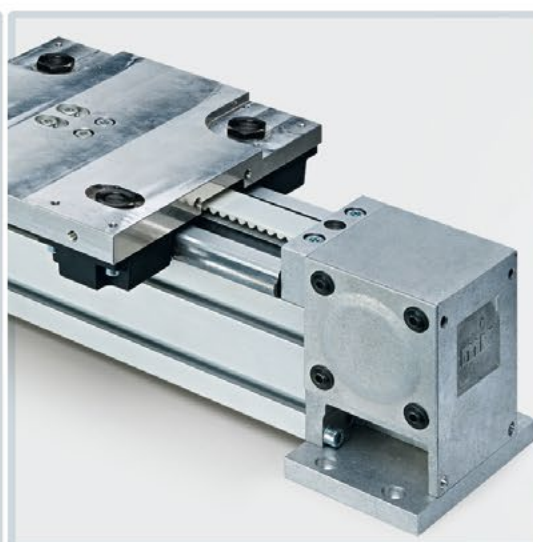
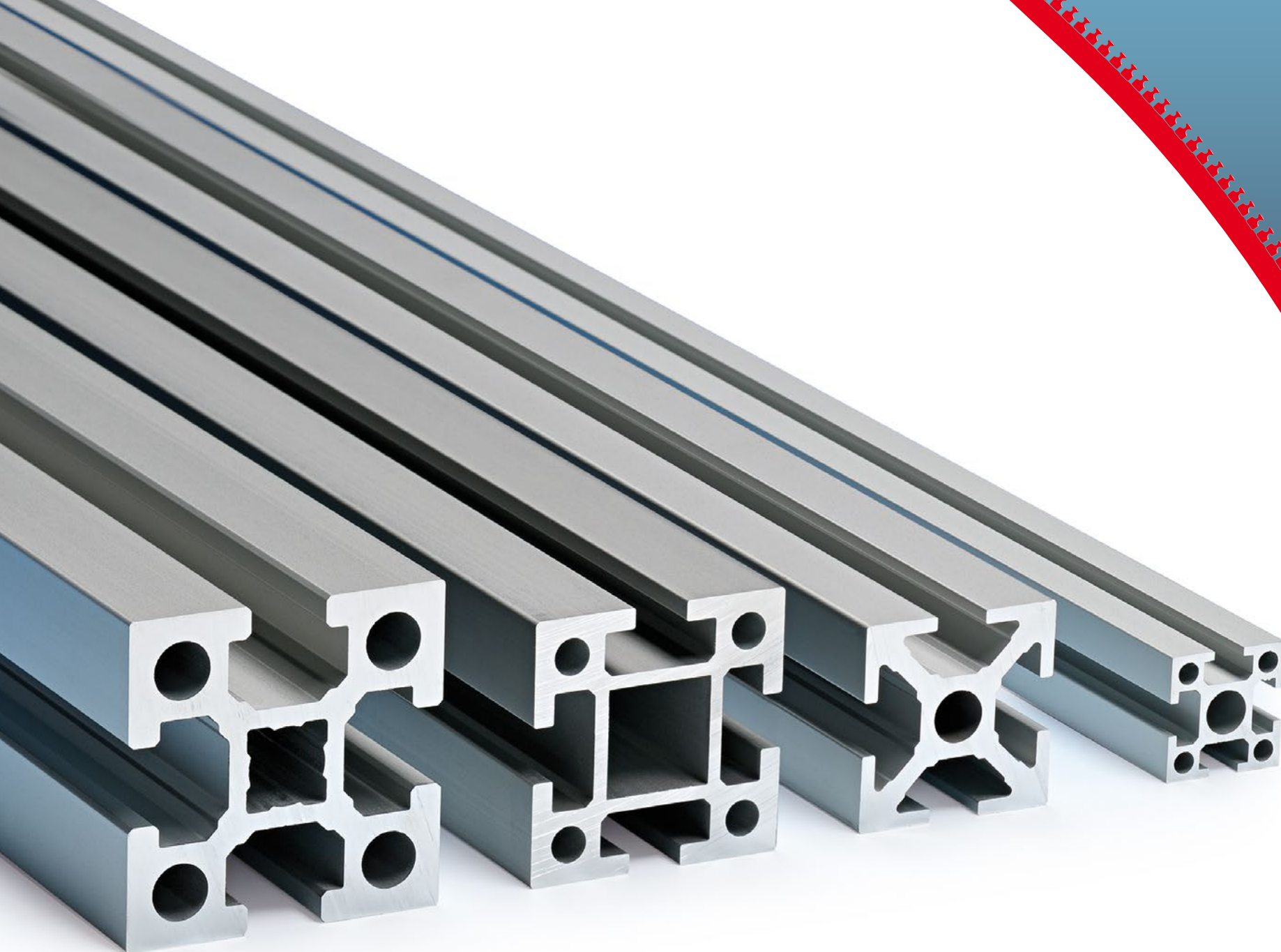


"We are looking forward to having numerous further suppliers of components making their 3D CAD models available as supplier catalogs in the CADENAS PARTSolutions library in the coming years. Through this we can ensure that we have access to all important supplier catalogs in the future as well."

Thomas Korzeniewski
Manager Research & Development
PowerWind GmbH

Benefits of PARTSolutions for PowerWind

- Thanks to the interfaces to the administration system of PowerWind, all engineering employees have access to the same component information.
- Duplicates are effectively avoided, since CAD models are no longer applied doubly.
- The number of necessary standard parts for the construction of two system platforms could be reduced by 57% from 661 to 287.
- By marking strategically preferred supplier catalogs, the process costs in engineering and purchasing were reduced by 5 to 10%.
- Acceleration of the construction process through the simple access to 500 manufacturer catalogs with millions of standard and purchased parts.



AROUND 100,000 PRODUCT DOWNLOADS PER YEAR MAKE eCATALOGSOLUTIONS
THE RECIPE FOR SUCCESS AT MK TECHNOLOGY GROUP

NOVEMBER

11 | 2012

MON	TUE	WED	THU	FRI	SAT	SUN	Week
			01	02	03	04	44
05	06	07	08	09	10	11	45
12	13	14	15	16	17	18	46
19	20	21	22	23	24	25	47
26	27	28	29	30			48

Maschinenbau Kitz GmbH, was founded in 1966 and is headquartered in Troisdorf, near Bonn, operates internationally; together with its subsidiaries and sales partners as the "mk Technology Group". Backed by over 40 years of experience, mk sells mechanical modules and components for profile, conveyor and linear technology, as well as factory equipment.



eCATALOGSOLUTIONS AT THE MK TECHNOLOGY GROUP

The mk Technology Group has been implementing the Electronic Product Catalog based on CADENAS' eCATALOGsolutions technology since 2003. Over the years it has been constantly improved and currently contains CAD data from over 2,100 products from the areas of profile and linear transfer technology and conveyor technique, as well as plant equipment.

3D CAD MODELS SIMPLIFY THE CONSTRUCTION PROCESS

With the Electronic CAD Product Catalog, mk Technology Group's CAD data are made available to users of the Strategic Parts Management PARTsolutions by CADENAS and thus engineers from over 100,000 companies. Furthermore the manufacturer from Troisdorf can make the CAD models of his products available on the 3D CAD portal PARTcommunity. From this portal, users can easily download mk's CAD data and then integrate it directly into their designs. For even better customer service, mk offers an interactive product configurator for Safety Guarding on CD-ROM. Thanks to the integrated system of rules, the users are shown configuration options which are displayed in 3D.

"The high download numbers of our PARTcommunity portal confirmed that we should continue to increase the number of mk products in our CAD product catalog."

Sven Saynisch
Head of Marketing
mk Technology Group

Benefits of eCATALOGsolutions for mk Technology Group

- The CAD models no longer need to be generated by mk and sent to the customers, but can be directly downloaded via the portal.
- The statistics of the download portal give mk important information about the product acceptance on the different markets.
- The interactive product configurator simplifies the selection of mk products significantly and ensures a first positive contact with interested parties.

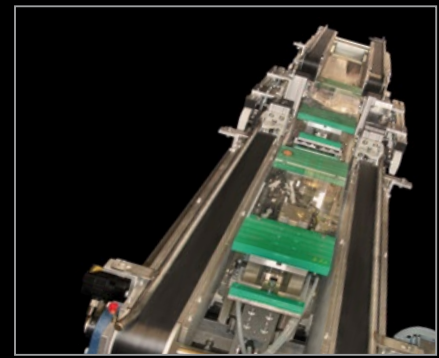


DECEMBER

12 | 2012

MON	TUE	WED	THU	FRI	SAT	SUN	Week
					01	02	48
03	04	05	06	07	08	09	49
10	11	12	13	14	15	16	50
17	18	19	20	21	22	23	51
24	25	26	27	28	29	30	52
31							01

conntronic constructs welding machines and welding plants for customers who want to produce parts in mass production cost-effectively. As a partner of the industry, conntronic lends its support during product development and prototype development. Finally, conntronic supplies ready-to-use customized CD welding systems, resistance welding equipment, inert gas welding systems, and laser welding machines.

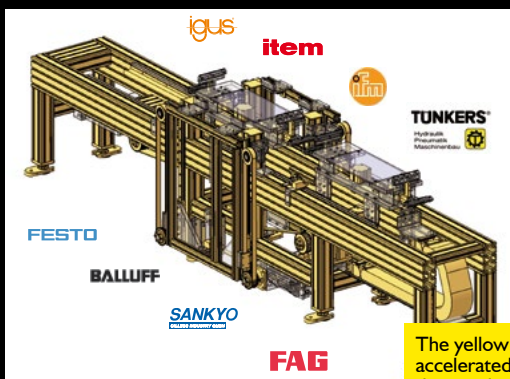


PARTSOLUTIONS AT CONNTRONIC

The conntronic Prozess- und Automatisierungstechnik GmbH has been utilizing the Strategic Parts Management PARTSolutions by CADENAS at five workstations since 2004. The manufacturer from Welden particularly uses the comprehensive PARTSolutions standard parts library for its plant engineering and special machinery manufacturing. With this library, the CADENAS software solution gives the mechanical engineering department access to millions of 3D CAD models from more than 500 notable suppliers.

ACCELERATED CONVEYOR BELT CONTAINS NUMEROUS PARTSOLUTIONS PARTS

The preferred use of 3D CAD models and parts from the standard parts library can be seen with an example of an accelerated conveyor belt for special machinery manufacturing of a capacitor discharge welding system manufactured at conntronic. Among other things, standard parts such as aluminum profiles from item Industrietechnik GmbH, sensors from ifm electronic gmbh, as well as power track chains from igus® GmbH, were integrated into the construction as well as additionally included into the facility during assembly, from the manufacturer catalogs of the software solution PARTSolutions.



The yellow colored parts of the accelerated infeed design come from the supplier catalogs of CADENAS PARTSolutions.

"As soon as a CAD model of a part from PARTSolutions manufacturer catalogs is integrated into our design, it is immediately then purchased. This is because we in the engineering department select those parts and components which our buyers purchase."

Thomas Nett
Manager of Engineering/Lab
conntronic Prozess- und
Automatisierungstechnik GmbH

Benefits of PARTSolutions for conntronic

- The comprehensive standard parts library displays a considerable advantage in speed since required supplier parts can easily be found and then integrated directly into the construction in the CAD system CATIA.
- Beforehand, parts at conntronic needed to be measured individually and numbers had to be taken over from catalogs. This created a high rate of error. Thanks to the high level of accuracy of CADENAS' CAD models, the potential for construction errors is minimized.

Read the case study:

